



**Allan Morris**  
estate agents

 **MAYFAIR**  
OFFICE GROUP



Flat 35 Harry Davis Court, Armstrong Drive, Worcester. WR1 2AA

£215,000

🛏️ 2 🪑 2 🚿 1



A very well presented 1st floor Apartment set within the luxury Harry Davis Court development of Diglis, with allocated undercroft parking, two Bathrooms and within easy walking distance to Worcester City centre.

Accommodation briefly comprises: Entrance Hall, open-plan Sitting Room/Kitchen/Diner, Bedroom with En-Suite Bathroom, further Bedroom and Shower Room.

Outside: The property benefits from one undercroft allocated parking space.

**LOCATION:**

The property is situated within the heart of the Diglis development, offering easy access to riverside walks, Worcester City centre, local amenities and within easy reach of major transport links.

**LIVING ROOM:**

5.08 x 2.23 (16'7" x 7'3")

**KITCHEN AREA:**

3.21 x 2.23 (10'6" x 7'3")

**BEDROOM 1:**

5.07 max 3.26 min x 2.97 max (16'7" max 10'8" min)

**BEDROOM 2:**

3.86 x 2.79 (12'7" x 9'1")

**BATHROOM:**

2.15 x 1.61 (7'0" x 5'3")

**EN-SUITE:**

3.13 x 2.05 (10'3" x 6'8")

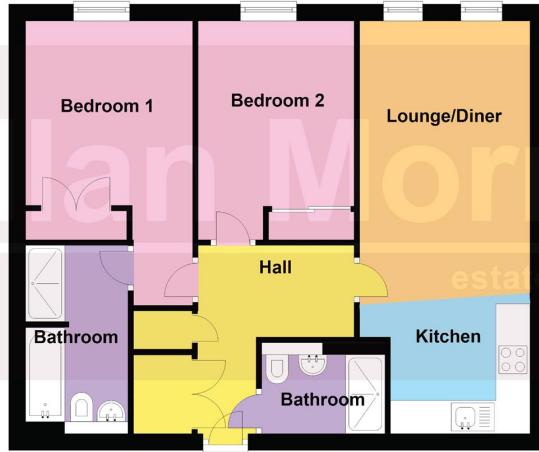
**UTILITY CUPBOARD:**

1.5 x 0.90 (4'11" x 2'11")





**First Floor**  
Approx. 66.1 sq. metres (711.2 sq. feet)



Total area: approx. 66.1 sq. metres (711.2 sq. feet)

DISCLAIMER - Floor plans shown are for general guidance only. Whilst every attempt has been made to ensure that the floorplan measurements are as accurate as possible, they are for illustrative purposes only.

- 2 Bedrooms
- Open-plan living
- Diglis location
- 2 En-Suites
- 1 Parking space
- Luxury Harry Davis Court

